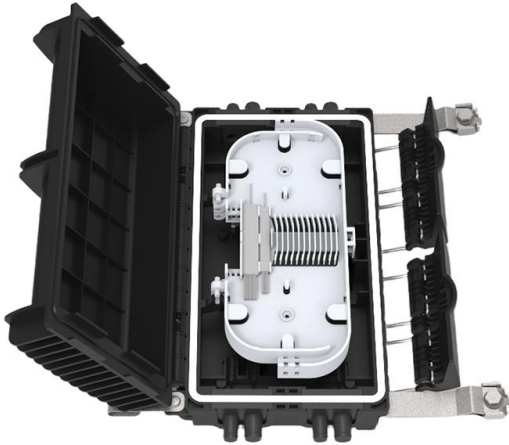


Fiber Optic Terminal Box

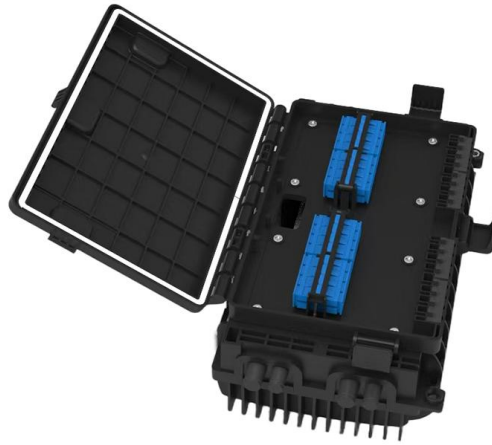
OTB-P027

Description:

OTB-P027 is a fiber optic terminal box that has two side doors for loading fiber optic splitter & fiber optic adapter, fiber splicing and fiber distribution. It is outdoor aerial handed application.



OTB-P027 (A side door)



OTB-P027 (B side door)

Features:

Material: ABS plastic

Max.48 fibers, 2pcs splice tray

Can load 16pcs SC simplex adapter

Can load PLC 1:8 or 1:16 steel tube type splitter

8pcs cable ports (4pcs $\Phi 14$ mm, 4pcs $\Phi 10$ mm) for cable entry & exit

Waterproof, outdoor aerial handed, IP65

Two doors: A side door for fiber splicing, B side door for cable management.

Specification:

Model	Splicing Capacity	Dimension	Adapter port
OTB-P027	48 fibers	164.75x291x115mm	Max. 16pcs SC simplex adapters

Application

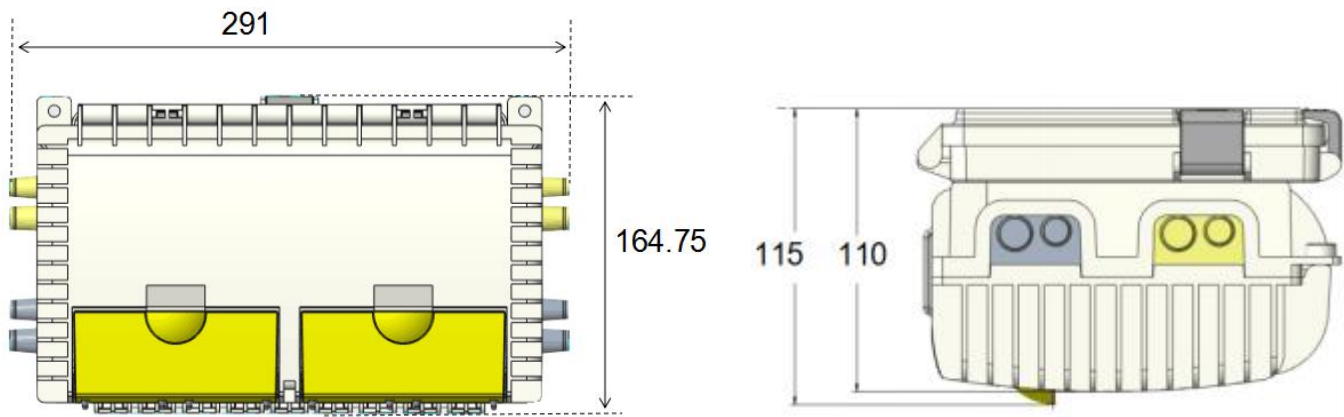
FTTH access network.

Telecommunication Networks

CATV Networks

Data communications Networks

Dimension: (mm)



More pictures:

